

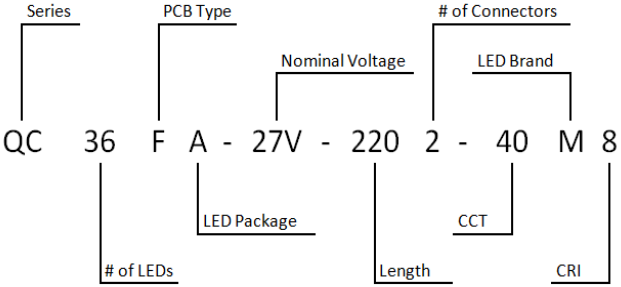


Features:

- > Flexible design: variable length light engines up to 4 feet available at 500 to 1500 lm/foot
- > High efficacy: >180 lm/W @ 500 lm/foot, >160 lm/W @ 1000 lm/foot
- > Continuous LED Pitch from board to board, eliminating dark spots
- > Aluminium core PCB offered in all light engines for excellent heat dissipation
- > CCT options, ranging from 2600K-6500K, up to 3-step MacAdam ellipse available



CORE Light Engine Order Code



Legend	
Series	SC: 1' Linear, Centered QC: 2' Linear, Centered EC: 4' Linear, Centered
PCB Type	F: FR4 S: Aluminum
Length	In inches, ex: 220=22.0"
LED Brand	M: Samsung S: Seoul Z: OSRAM L: LG

Board	Dimensions [Inch]	Specified Current [mA]	Voltage Range [V]	Light Output @ Specified Current [lm]	Efficacy [lm/W]	Max Light Output [lm]
SC9FA	5.5 x 1.0	125	25.4 - 28.7	550	160	750
SC18FA	11.0 x 1.0	250	25.4 - 28.7	1,100	160	1,500
QC36FA	22.0 x 1.0	500	25.4 - 28.7	2,200	160	3,000
EC72FA	44.0 x 1.0	1,000	25.4 - 28.7	4,400	160	6,000

Release: 2016-CORE-1.0



Electrical Characteristics ($T_j = 45^\circ\text{C}$)

Board	# of LEDs	Current [mA]	Voltage [V]	Power [W]	Luminous Flux [lm]		
					Min	Typ.	Max
SC9FA	9	65	26.2	1.7	275	285	295
		120	27.6	3.3	495	510	525
		180	28.8	5.2	725	750	775
SC18FA	18	130	26.2	3.4	550	575	590
		240	27.6	6.6	990	1,020	1,050
		360	28.8	10.4	1,450	1,500	1,550
QC36FA	36	260	26.2	6.8	1,110	1,150	1,180
		480	27.6	13.3	1,980	2,040	2,100
		720	28.8	20.8	2,900	3,000	3,100
EC72FA	72	520	26.2	13.6	2,220	2,300	2,360
		960	27.6	26.5	3,960	4,080	4,200
		1,440	28.8	41.5	5,800	6,000	6,200

CCT: Lumen Multiplication Factor

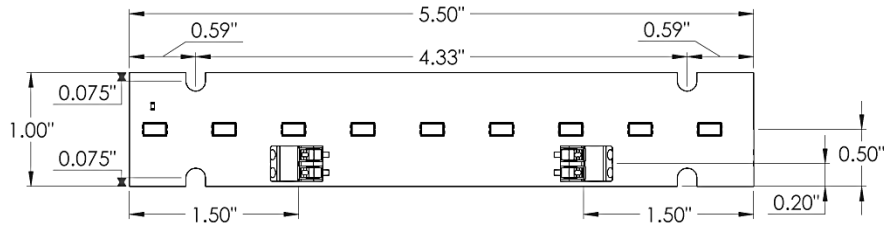
3000K	3500K	4000K	5000K
0.95	0.97	1.00	1.03

Junction Temperature (T_j): Lumen Multiplication Factor

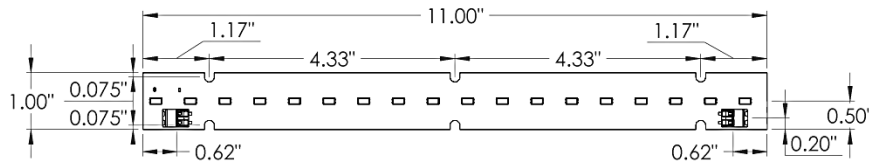
25°C	45°C	65°C	85°C
1.03	1.0	0.97	0.94

Mechanical Specifications

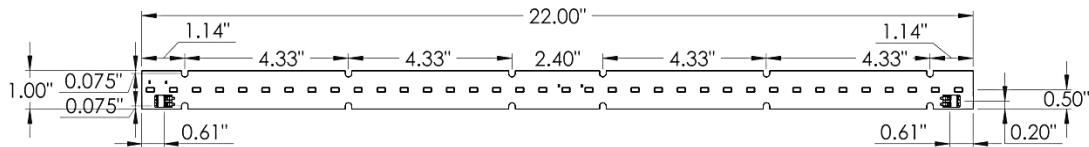
SC9FA	5.5" x 1.0"	LED: 5630 Mid-Power	Connectors: 2x Wire to Board
-------	-------------	---------------------	------------------------------



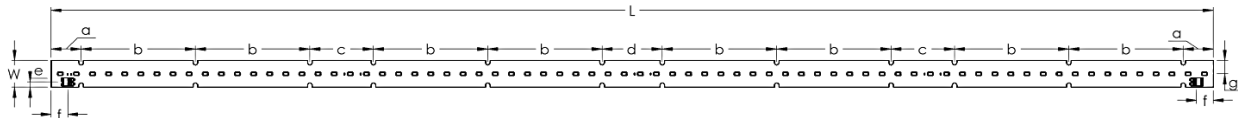
SC18FA	11.0" x 1.0"	LED: 5630 Mid-Power	Connectors: 2x Wire to Board
--------	--------------	---------------------	------------------------------



QC36FA	22.0" x 1.0"	LED: 5630 Mid-Power	Connectors: 2x Wire to Board
--------	--------------	---------------------	------------------------------



EC72FA	44.0" x 1.0"	LED: 5630 Mid-Power	Connectors: 2x Wire to Board
--------	--------------	---------------------	------------------------------



Dimensions Reference Table (Inches)

a = 1.137	b = 4.33	c = 2.40	d = 2.276	e = 0.20
f = 0.656	g = 0.50	L = 44.0	W = 1.0	